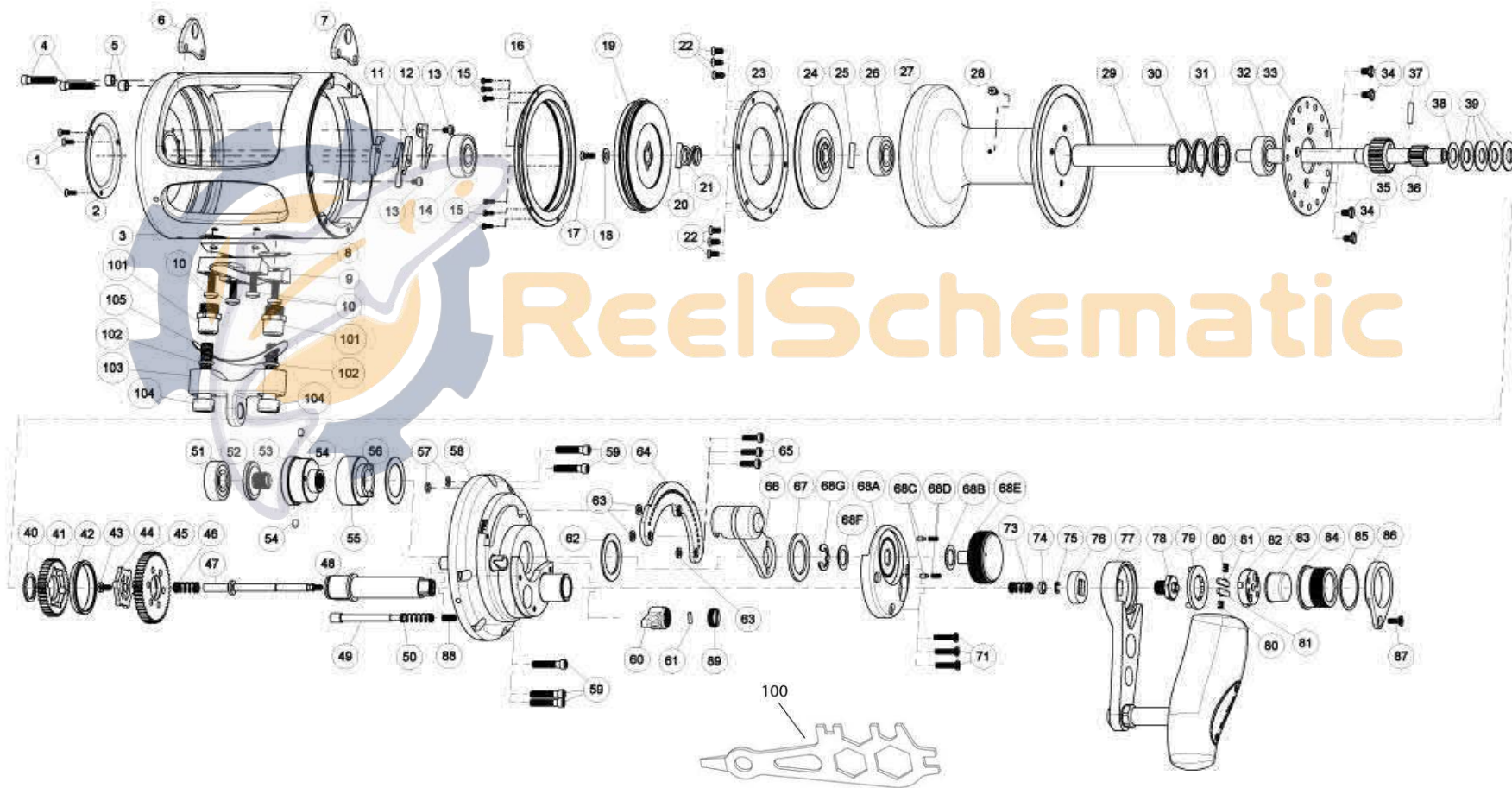


FIN-NOR®

LEGENDARY TACKLE SINCE 1933

Santiago 50



FIN-NOR®

LEGENDARY TACKLE SINCE 1933

Santiago 50

Fin_Nor Santiago Trolling Reels - 50

Key No.	Description			Key No.	Description		
		50				50	
1	Cosmetic Cover Screw	HX107-03		51	Ball Bearing	MF017-01	
2	Cosmetic Cover	LF145-01		52	Preset Screw	EF019-01	
3	Frame Assembly	FF301-01		53	Cam Follower	EF153-01	
4	Harness Lug Screw	LF053-01		54	Cam Pin	EF093-01	
5	Harness Lug Screw Collar	LF094-01		55	Cam	EF028-01	
6	Harness Lug	EF151-02		56	Washer	EF035-03	
7	Harness Lug	EF151-01		57	O-Ring	MF101-01	
8	Reel Foot Gasket	LF155-01		58	Gear Side Cover Assembly	EF324-01	
9	Reel Foot	LF106-01		59	Side Cover Screw	LF053-01	
10	Reel Foot Screw	LF125-01		60	Bait Click Lever	VF109-01	
11	Anti Reverse Pawl	LF063-01		61	Bait Click Pawl Pin	WF100-01	
12	Anti Reverse Pawl Spring	LF052-01		62	Drag Lever Washer	EF035-01	
13	Anti Reverse Pawl Screw	LF050-01		63	Quadrant Spacer	MF094-01	
14	Ball Bearing	MF017-01		64	Quadrant	EF152-01	
15	Spool Cover Screw	LF057-01		65	Quadrant Screw	LF123-01	
16	Spool Cover	EF051-01		66	Drag Lever Assy	EF355-01	
17	Spool Shaft Screw	LF107-02		67	Washer	EF035-02	
18	Spool Shaft Washer	MF038-01		68	Front Housing Cover Kit include	EF499-01	
19	Drag Plate Assembly -"B"	EF348-01			68A - Front Housing Cover	EF099-01	
20	Drag Plate Pin	LF100-01			68B - Washer	LF038-01	
21	Drag Compression Spring	EF040-01			68C - Pre Set Knob Click Pawl	PW098-01	
22	Drag Washer Screw	LF107-01			68D - Pre Set Knob Click Spring	YW114-01	
23	Drag Washer	EF045-01			68E - Preset Knob	LF029-01	
24	Drag Plate Assembly -"A"	FF348-01			68F - Washer	LF038-01	
25	Drag Plate Pin	EF100-01			68G - E-Clip	LF092-01	
26	Ball Bearing	MF017-01		71	Front Housing Cover Screw	MF050-01	
27	Spool	FF021-01		73	Link Spring	LF070-01	
28	Line Ting Screw	NF125-01		74	Link Spring Holder	MF081-01	
29	Bearing Spacer	FF160-02		75	E-Clip	QW120-01	
30	Pressure Release Spring	MF040-01		76	Handle Collar	LF081-01	
31	Pressure Release Spring Holder	EF041-01		77	Handle Assembly	EF318-01	
32	Ball Bearing	MF017-01		78	Handle Nut	MF003-01	
33	Bait Click Plate	EF113-01		79	Handle Nut Retainer	LF034-01	
34	Bait Click Plate Screw	MF107-01		80	Shift Spring	MF070-01	
35	Low Speed Pinion Gear	EF011-01		81	Shift Holder	LF104-01	
36	Spool Shaft	FF015-01		82	Shift Spring Holder	MF159-01	
37	Pinion Gear Pin	FF093-01		83	Shift Button	MF062-01	
38	Drag Adjusting Washer	EF032-03		84	Shift Knob	LF158-01	
39	Drag Disc Spring	EF046-01		85	Washer	MF035-01	
40	Retaining Ring	LF075-01		86	Shift Knob Holder	LF159-01	
41	Low Speed Drive Gear	FF012-01		87	Shift Knob Holder Screw	MF076-01	
42	Gear Spacer	EF160-01		88	Bait Click Lever Spring	JF071-01	
43	Link Retainer Screw	MF053-01		89	Bait Click Lever Cap	VF115-01	
44	Link	EF036-01		100	Wrench	DA113-01	
45	High Speed Drive Gear	EF012-01		101	Rod Clamp Nut	LF003-01	
46	Link Spring	LF070-01		102	O-Ring	LF101-01	
47	Link Shaft	EF146-01		103	Rod Clamp	GF154-01	
48	Crank Shaft	EF008-01		104	Rod Clamp Bolt	MF125-02	
49	Bait Click Pawl	EF114-01		105	Rod Clamp Pad	NF155-01	
50	Bait Click Spring	LF110-01					